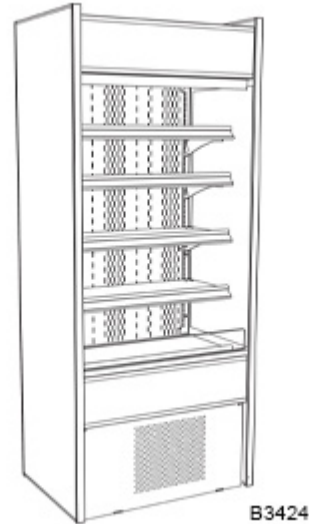


- **B3424** 34-1/4"L x 24-1/4"D x 82-3/8"H
- **B4524** 45-1/4"L x 24-1/4"D x 82-3/8"H
- **B6624** 66-1/8"L x 24-1/4"D x 82-3/8"H
- **B8824** 88-1/8"L x 24-1/4"D x 82-3/8"H



Included

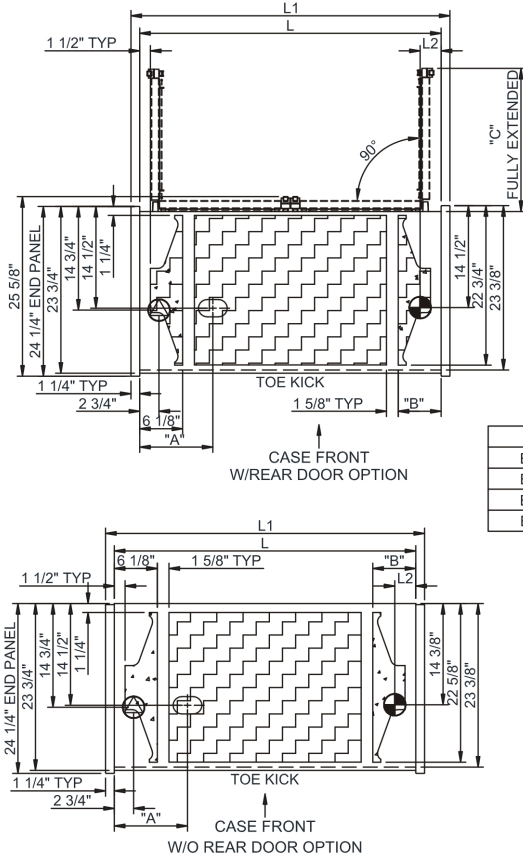
- Breeze~E (Type-II) w/ EnergyWise s/c refrigeration
- Blue Fin coated coil
- Compressor air lower front intake and upper front discharge. Front panel cannot be blocked
- Condensate pan (self-contained refig. only)
- Flat header
- Integrated average product temperature of 40°F or less
- LED 4000K top light(s)
- One piece formed ABS plastic tub (n/a B8824)
- One year parts & labor; 5 year compressor warranty
- Removable deck pans provide complete access to evaporator coil & refrigeration connections
- Shelving removable and adjustable on 1" centers

Specify	Standard Features	Additional Options
EXTERIOR COLOR	• Laminated (non-premium) Confirm pattern/grain direction	• Laminated (premium) Confirm pattern/grain direction • Stainless steel (includes lower front panel)
INTERIOR COLOR	• Black	• Stainless steel
LWR PERFORATED FRNT PANEL	• Painted - Black	• Stainless steel (w/stainless ext. only)
BASE	• Casters w/ levelers	• Levelers (only) • Seismic levelers
END PANEL LEFT	• Full end panel w/mirror interior (metal edge matches interior color)	• Cutaway end panel (metal edge matches interior color) • No end panel w/ synchronized defrost
END PANEL RIGHT	• Full end panel w/mirror interior (metal edge matches interior color)	• Cutaway end panel (metal edge matches interior color) • No end panel w/ synchronized defrost
EXTERIOR BACK PANEL	• Solid back panel, black	¹ • Rear loading hinged doors, locking (changes air discharge to lower rear) • Solid back panel, white
UPPER FRONT PANEL	• Flat front panel	• Black slatwall
SHELVING	• Metal shelves, non-lighted	• Metal shelves, lighted (LED 4000K)
ELECTRICAL CONNECT	• 6' Straight blade power cord (base exit)	• 6' Locking blade power cord (base exit) • 6' Locking blade power cord (top exit) • 6' Straight blade power cord (top exit) • Electrical leads (remote)
REFRIGERATION	• Breeze~E (Type-II) w/ EnergyWise s/c refrigeration	• Note: Remote doesn't incl Conds unit. Floor drain reqd. ² • Remote w/thermostat, solenoid & TXV
MISCELLANEOUS		• Second year parts & labor warranty (excludes compressor) • Shelf w/ extended product stop & air deflectors for salad bins
ACCESSORIES		• Clean Sweep® coil cleaner (n/a w/remote) • Night curtain, retractable, non-locking • Price tag molding (matches interior color) • Removable solid security cover, locking

Option Notes: 1 - B3424 - Specify service LH or RH hinge
2 - See tech spec for load reqmts

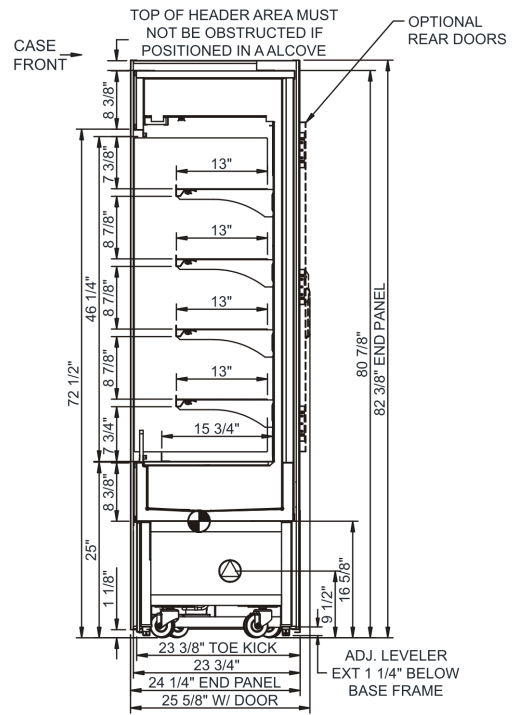
Intended Environment: Type II - Designed to operate in ambient conditions of 80°F and 60% relative humidity unless noted otherwise in system information below.		
Zone	Intended Product To Be Displayed	Warmest Avg Prod Temp ° F
1	Packaged refrigerated products	40

PLAN VIEW



	"A"	"B"	"C"
B3424	7"	N/A	29 1/2"
B4524	7"	6 1/8"	20 3/8"
B6624	10 3/8"	6 1/8"	N.A.
B8824	19 3/8"	17 1/2"	N.A.

SIDE VIEW



NOTE: ALL DIMENSIONS APPROXIMATE

- ELECTRICAL JUNCTION BOX (SUPPLIED WITH 6" LEADS OR POWER CORD).
- LOCATION OF DRAIN TUBE FOR REMOTE REF. ONLY (SUPPLIED WITH 3/4" OR 1 1/2" PVC TUBE).
- REFRIGERATION LINE CONNECTION.
- REMOTE FLOOR SINK & UTILITIES ACCESS AREA.
- SELF-CONTAINED CASE SERVICE ACCESS AREA.
- DRY CASE SERVICE ACCESS AREA.

Model Technical Specifications

Model	L"	L1"	L2"	System Circuit Volts		Phs	Freq	Amps ***	Watts	Wires	NEMA Plug	SST	Conv. Rack BTUH	Para. Rack BTUH	Est Wt	
				Circuit #1	110-120											
B3424	32.00	34.25	3.13	Remote(Type II)	Circuit #1	110-120	1	60	1.20	60	2+G	Leads Single	20.00	5098	4720	800
				Self-Contained (R513A)	Circuit #1	110-120	1	60	15.64	1,198	2+G	5-20P or L5-20P	N/A	N/A	N/A	
B4524	43.00	45.25	3.13	Remote(Type II)	Circuit #1	110-120	1	60	1.26	77	2+G	Leads Single	20.00	5659	5240	900
				Self-Contained (R449A)	Circuit #1	208-240	1	60	10.82	2,023	2+G	6-15P or L6-15P	N/A	N/A	N/A	
B6624	63.88	66.13	3.13	Remote(Type II)	Circuit #1	110-120	1	60	1.92	130	2+G	Leads Single	20.00	5659	5240	1,100
				Self-Contained (R449A)	Circuit #1	208-240	1	60	13.92	2,593	2+G	6-20P or L6-20P	N/A	N/A	N/A	
B8824	85.88	88.13	3.13	Remote(Type II)	Circuit #1	110-120	1	60	2.25	158	2+G	Leads Single	20.00	11189	10360	1,200
				Self-Contained (R449A)	Circuit #1	208-240	1	60	16.00	3,196	2+G	6-20P or L6-20P	N/A	N/A	N/A	

*** Does not include electric defrost on freezer models.

Regulatory Approvals:

All Models
 Accordance with AHRI Std 1200
 ETL Listed to UL 471
 ETL Listed to CAN/CSA 22.2 No. 120
 UL Sanitation to NSF Std 7

In Accordance with
AHRI Std 1200

DOE 2017
 Energy Efficiency
 Compliant

Important Notes:

- ELECTRICAL NOTE: If GFCI is required, a GFCI breaker MUST be used in lieu of a GFCI receptacle
- Performance issues (product temperatures, water on floor, etc.) caused by adverse conditions are not covered by warranty.
- Keep unit at least 15' from exterior doors, overhead HVAC vents, or any air curtain disruption.
- End panels must be tightly joined or kept at least 6" away from any structure to prevent condensation.
- Do not expose unit to direct sunlight or any heat source (ovens, fryers, etc.).
- Tile floors, low ceilings, or small rooms will increase noise level.

⚠ WARNING: This product can expose you to chemicals, including Urethane (Ethyl Carbamate), which are known to the State of California to cause cancer and birth defects or other reproductive harm. For more information go to www.P65Warnings.ca.gov.